

Find all common multiples of 5 and 6 between 1 and 60.
Skip-count or use a hundred chart.

Going Further

Look for a pattern in the multiples of 5 and 6.
Is there a quick way to identify their common multiples?

5 hundreds + 25 tens + 3 ones

Write this number using standard notation.

Then write it in word form.

Use base-ten blocks or place value disks.

Going Further

Now write this number in standard notation and word form: 4 hundreds + 7 tens + 22 ones.

$\frac{6}{8}$ is equivalent to $\frac{?}{4}$.

What is the missing numerator?

Draw one or two number lines to solve the problem.

Going Further

Write another equivalent fraction problem and ask a partner to solve it.

The area of the rectangular playground is 700 square yards. The width of the playground is 10 yards.

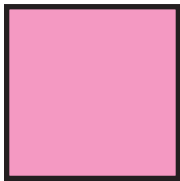
How many yards is the length?

Use the area formula. Show your work.

Going Further

What is the perimeter of the playground?

Draw a picture or write an equation to show your thinking.



How many lines of symmetry does each figure have?

Draw a picture to illustrate the solution.

Going Further

Draw a polygon that is not a square or a trapezoid and show the lines of symmetry.